

MG West values client communication and satisfaction above all else. Our teams know that the design and installation is only as good as its ability execute. We take the time to meet with you personally and discuss the scope of your work to ensure your business requirements are recognized and met.

Our account and project managers have years of industry experience to aid in finding the best solution for you, and will be a main point of contact throughout your project. Our project managers are well versed in client communications, construction process and installation procedures. Together, they form a skillful and qualified team that delivers exceptional results.

## Services

### Procurement

- Product selection
- Specifications
- Special handling
- Cost quotation
- Order status report
- \* Repair and reorder
- \* Product storage

### Planning and Project Management

- Specifications of systems or wall components
- Final plans and installation drawings
- Installation coordination

### Receiving

- Pre-stage analysis
- Product inspection

### Move Management

- Move planning
- Move coordination

### Rental

#### Delivery & Installation

- Site inspection
- Installation supervision
- Post installation walk-through
- Punch list follow-up
- User orientation
- U.S. Inter-market services

#### Post Installation

- Warranty and general product maintenance
- Punch list

#### Additional Services

- Furniture restoration
- Panel cleaning and refurbishing
- Electrostatic painting
- Re-upholstering
- Reconfiguration program



San Francisco  
Corporate Office and Showroom

611 Mission St., 3rd Flr.  
San Francisco, CA 94105

Phone : 415.284.4800

Fax : 415.284.0150



MG SINCE 1905  
West



MG West provides personalized service and draws on the deep experience of its staff to ensure the highest level of client satisfaction. From San Francisco to Manhattan, we strive to be the dealer you turn to.

MG West is proud to offer Knoll as it's premier furniture line. Knoll is widely known as the cornerstone of great design and an innovator in sophisticated yet functional design. MG West also offers wall systems from DIRTT Environmental Solutions, a leader in sustainable, flexible, design-driven modular walls.

As a part of our commitment to having the finest staff on your project, our dedicated project teams focus solely on either furniture or wall systems. We enjoy a reputation as an upstanding and capable partner in our relationships with the A&D community, general contractor, project managers, to deliver.

No project is too large or too small for our experienced teams. If you have an upcoming project, we hope you'll consider MG West first.



## Jamba Juice



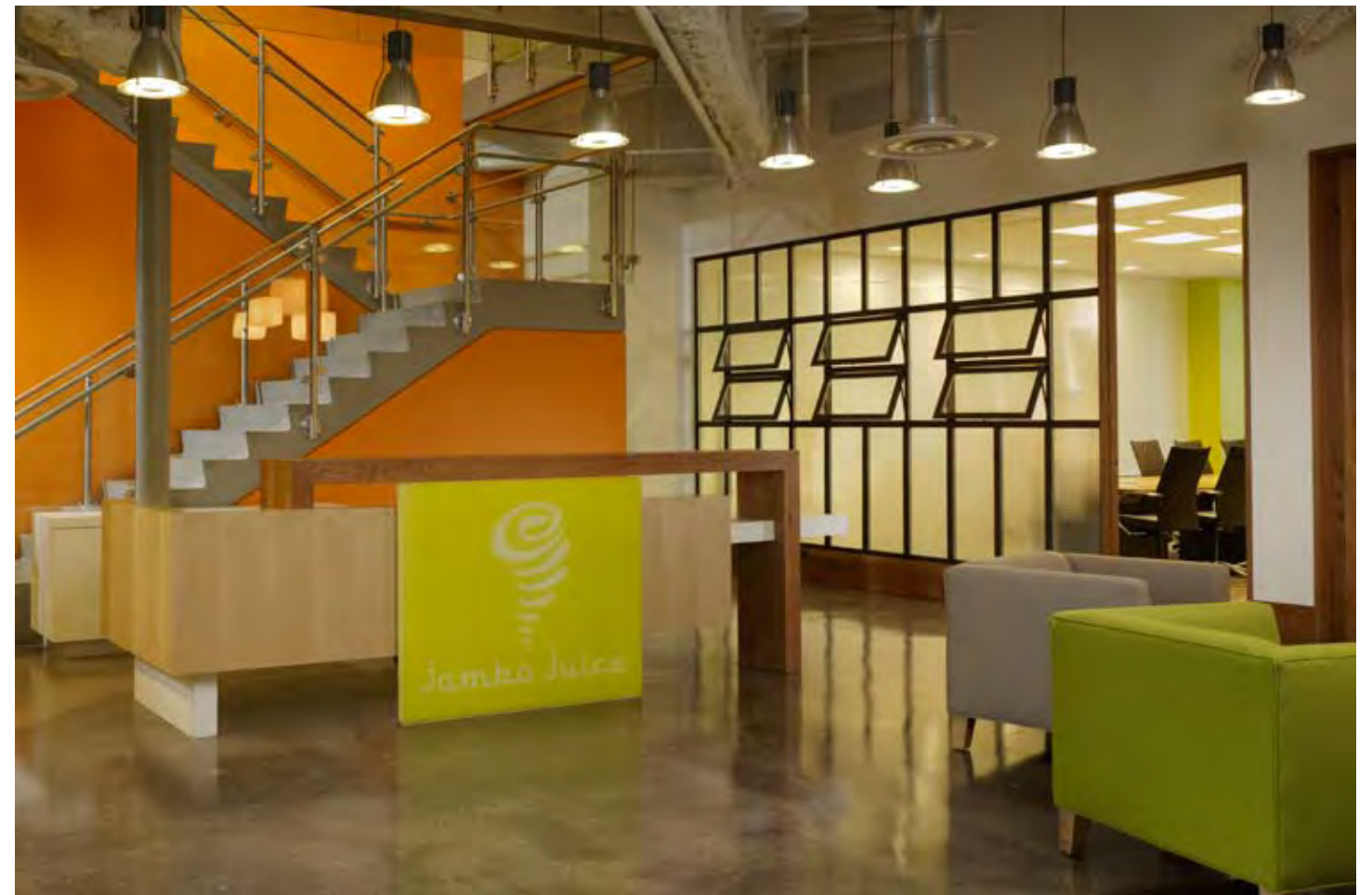
Size : 55,000 sq.ft.

Market segment : Corporate

Scope : Private offices, workstations, conference room furniture, lounge furniture, café furniture, filing, mail room, task seating

Architect : Pollack Architecture

Product : Knoll, Terra Mai Reclaimed Wood, Davis



## James Irvine Foundation



Size : 16,000 sq.ft.

Market segment : Non-profit

Scope : Workstations, private offices

Architect : SOM Architects

Product : Knoll, Herman Miller, Vitra, Woodtech

## The North Face



Size : 85,000 sq.ft.

Market segment : Corporate

Scope : Office seating, workstations, conference rooms, reception area

Architect : Richard Pollack & Associates

Product : Knoll



## Sephora University



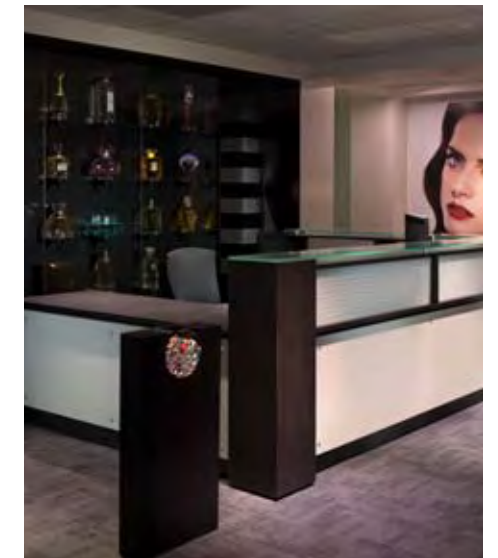
Size : 60,000 sq.ft.

Market segmen : Corporate

Scope : Private offices,workstations, conference room furniture, lounge furniture, café furniture, filing, mail room, task seating, training room furniture

Architect : Fee Munson & Ebert

Product : Knoll, HPL Contract, Sit on It, Nienkamper



## Dechert LLP



Size : 45,000 sq.ft.

Market segment : Legal

Scope : Partner and paralegal offices

Architect : Pollack Architecture

Product : DIRTT



## Advent Software



Size : 200,000 sq.ft.

Market segment : High-tech

Scope : Private offices, break rooms, conference rooms

Architect : MacCracken Architects

Product : Knoll, DIRTT

## Buchalter Nemer



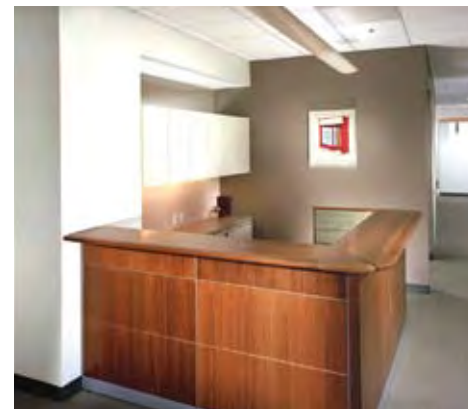
Size : 25,000 sq.ft.

Market segment : Legal

Scope : Corporate head quarter, library

Architect : Pollack Architecture

Product : Knoll, Bernhardt, Office Specialty, ICF / Neinkamper, Custom Casegoods



## Environmental Defense Fund



Size : 16,000 sq.ft.

Market segment : Non-profit

Scope : Private office glass storefronts

Architect : Pollack Architecture

Product : DIRTT



## Belcorp



Size : 15,000 sq.ft.

Market segment : Retail

Scope : Private offices, open workstations, conferencing, reception lobby, break room, filing, task seating

Architect : Fennie + Mehl

Product : Knoll, Nienkamper, Bernhardt



## Allen Matkins, LLP



Size : 34,000 sq.ft.

Market segment : Legal

Scope : Filing, paralegal, reception, case room, caucus room, library, conference rooms, accounting, facilities office, mail room, IT office

Architect : Gensler

Product : Knoll, HPL Contract, Bernhardt, Global, ICF, Brayton, ICT / Keilhauer, Rudin, Gordon International

## O'Melveny & Myers, LLP



Size : 140,000 sq.ft.

Market segment : Legal

Scope : Partner offices, secretarial stations, seatings, conference, break room, training, filing.

Architect : Gensler

Product : Knoll, HBF, Bernhardt, Kroll, Minotti, Flexform, Casa Milano, Brayton, Bright, Desousa Hughes, Nusa, Maxalto, HPL Contract, Workrite, West Coast Industries, Larsen, Spacesaver, Source International, Colbrook Bosson Saunders.

## 1000 Eighth Avenue Apartments



Size : 900 Residential Apartment Units

Market segment : Corporate

Scope : Lobby areas, sales offices, cafe, fitness studio, business center

Architect : Fennie + Mehl Architects

Product : Knoll, Bernhardt, HPL Contract

